

Management Information Systems

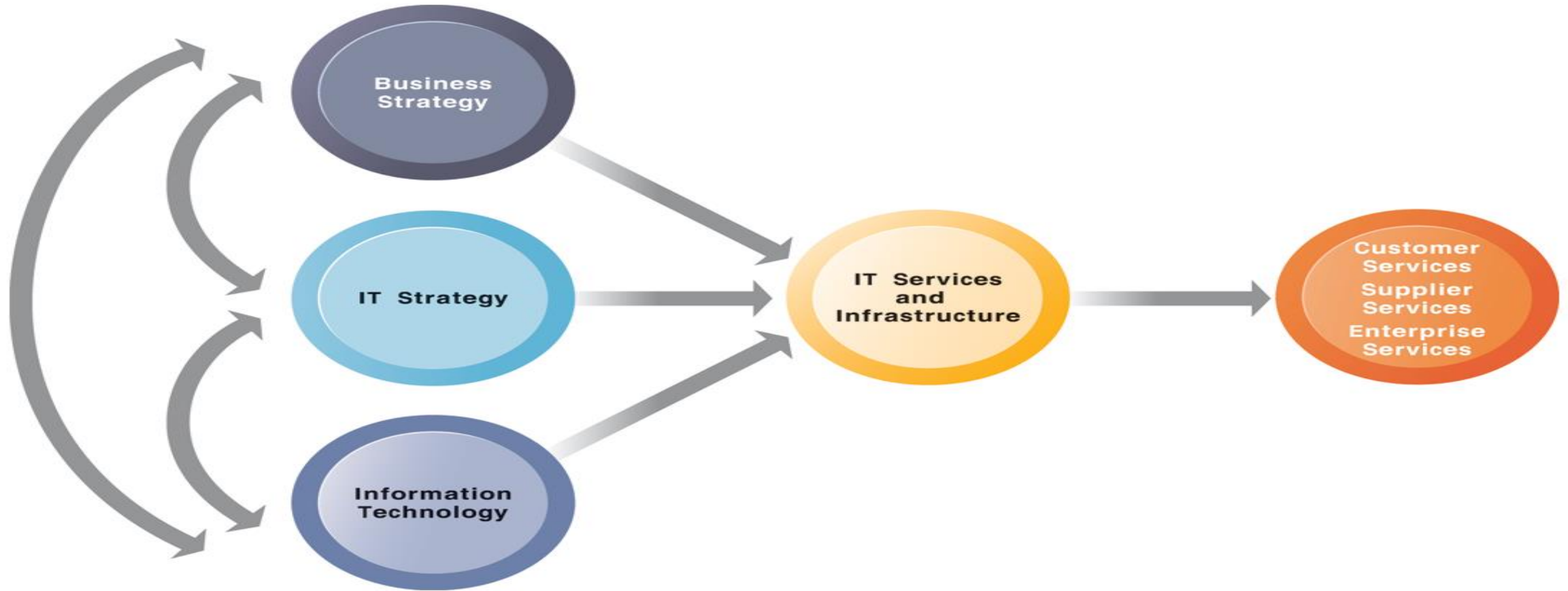
IT Infrastructure and Emerging Technologies

By: Binit Patel

Assistant Professor, I2IM - CHARUSAT

IT infrastructure

- Set of physical devices and software required to operate enterprise
- Set of firmwide services including:
 - Computing platforms providing computing services
 - Telecommunications services
 - Data management services
 - Application software services
 - Physical facilities management services
 - IT management, standards, education, research and development services



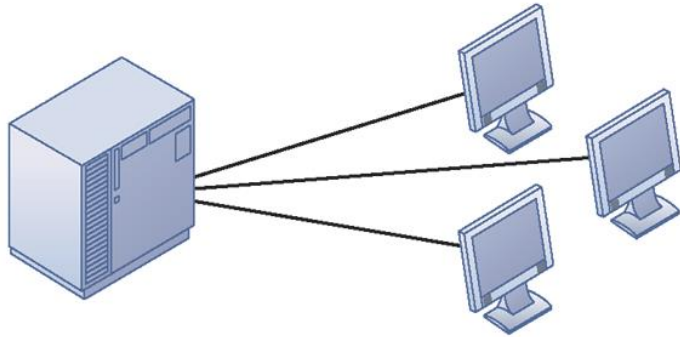
Evolution of IT infrastructure

- General-purpose mainframe & minicomputer era: 1959 to present
 - 1958 IBM first mainframes introduced
 - 1965 Less expensive DEC minicomputers introduced
- Personal computer era: 1981 to present
 - 1981 Introduction of IBM PC
 - Proliferation in 80s, 90s resulted in growth of personal software
- Client/server era: 1983 to present
 - Desktop clients networked to servers, with processing work split between clients and servers
 - Network may be two-tiered or multitiered (N-tiered)
 - Various types of servers (network, application, Web)

Evolution of IT infrastructure (Cont...)

- Enterprise computing era: 1992 to present
 - Move toward integrating disparate networks, applications using Internet standards and enterprise applications
- Cloud Computing: 2000 to present
 - Refers to a model of computing where firms and individuals obtain computing power and software applications over the Internet or other network
 - Fastest growing form of computing

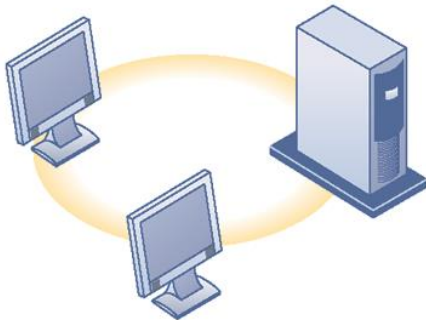
Mainframe/
Minicomputer
(1959–present)



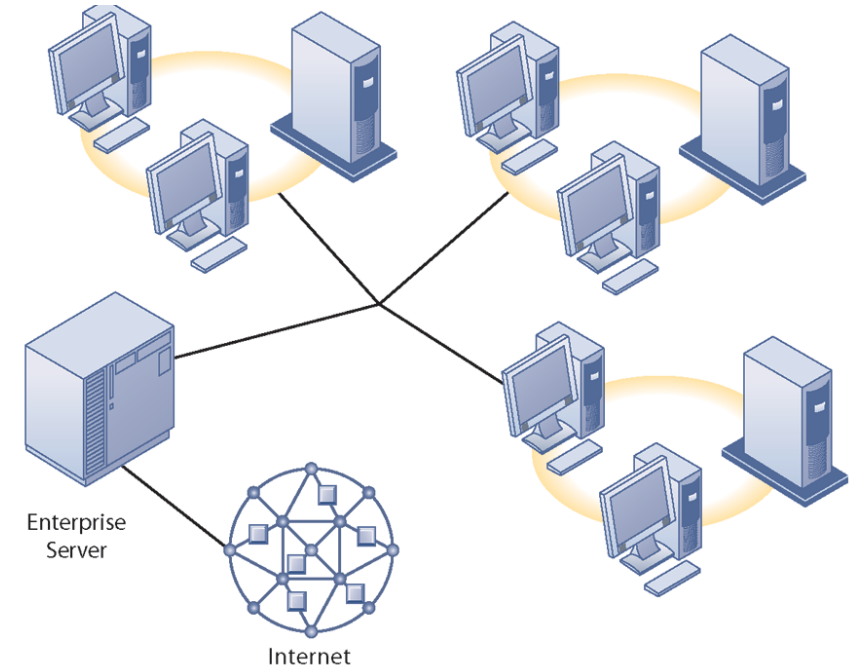
Personal
Computer
(1981–present)



Client/Server
(1983–present)



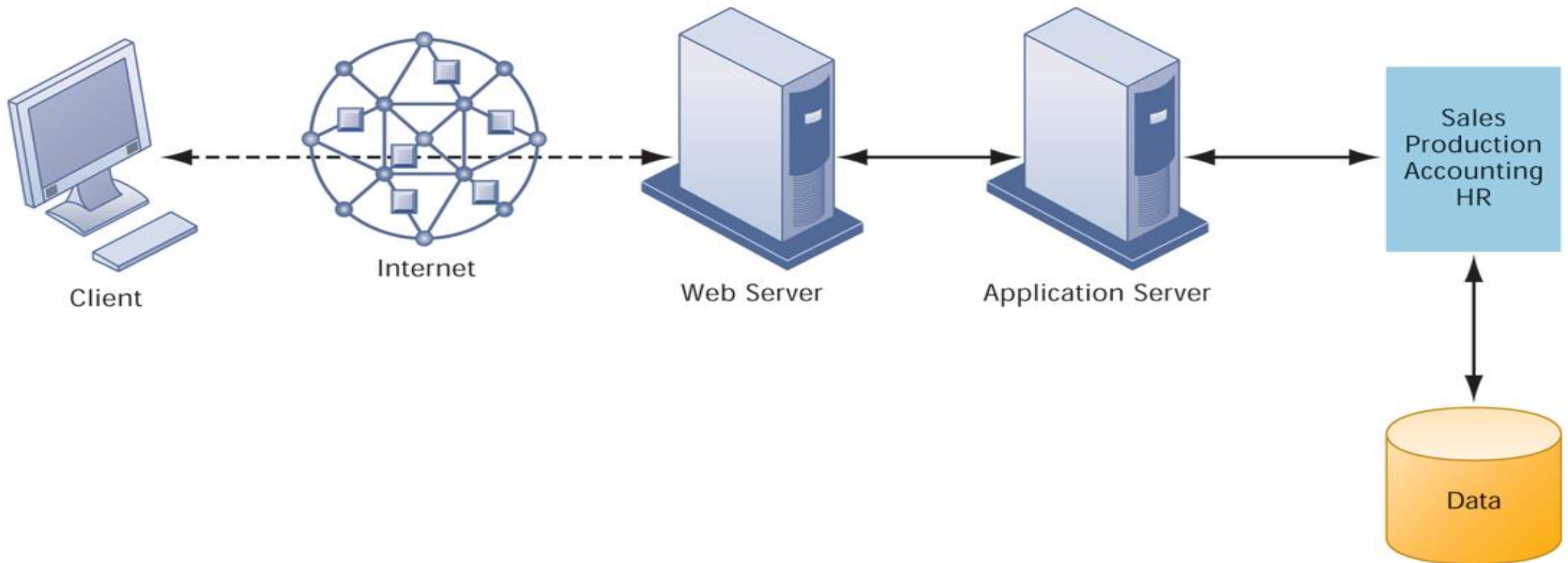
Enterprise
Computing
1992–present)



Cloud and Mobile
Computing
(2000–present)



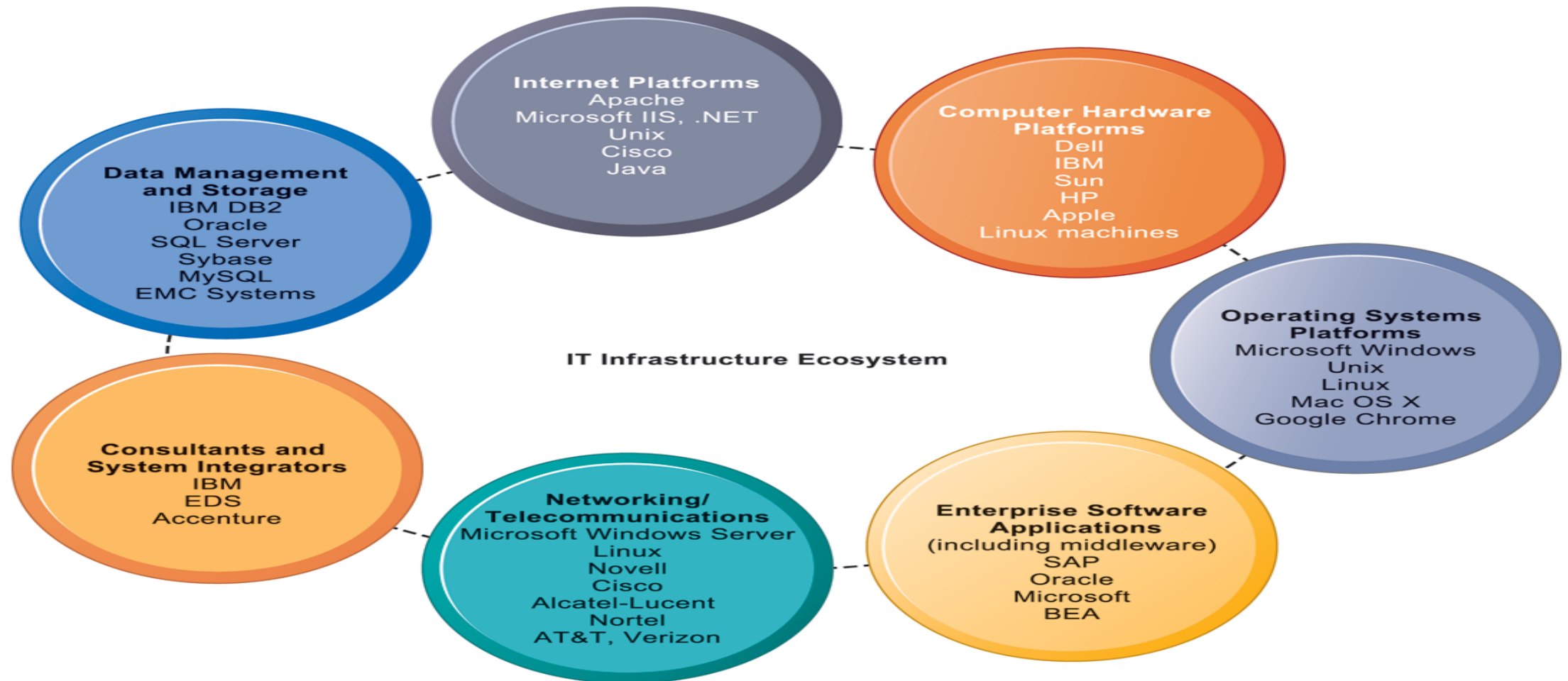
A Multi-tiered Client/Server Network (N-tier)



Infrastructure Components

- IT Infrastructure has 7 main components
 1. Computer hardware platforms
 2. Operating system platforms
 3. Enterprise software applications
 4. Data management and storage
 5. Networking/telecommunications platforms
 6. Internet platforms
 7. Consulting system integration services

Infrastructure Components



Infrastructure Components

- Computer hardware platforms
 - Client machines
 - Desktop PCs, mobile devices – PDAs, laptops
 - Servers
 - Blade servers: ultrathin computers stored in racks
 - Mainframes
 - IBM mainframe equivalent to thousands of blade servers
 - Top chip producers: AMD, Intel, IBM
 - Top firms: IBM, HP, Dell, Sun Microsystems

Infrastructure Components

- Operating system platforms
 - Operating systems
 - Server level: 75% run Windows; 25% run Unix or Linux
 - Client level:
 - 90% run Microsoft Windows (XP, 2000, CE, etc.)
 - Handheld device OS's (Android, iPhone OS)
 - Cloud computing OS's (Google's Chrome OS)
- Enterprise software applications
 - Enterprise application providers: SAP and Oracle
 - Middleware providers: BEA

Infrastructure Components

- Data management and storage
 - Database software:
 - IBM (DB2), Oracle, Microsoft (SQL Server), Sybase (Adaptive Server Enterprise), MySQL
 - Physical data storage:
 - EMC Corp (large-scale systems), Seagate, Maxtor, Western Digital

Infrastructure Components

- Networking/telecommunications platforms
 - Telecommunication services
 - Telecommunications, cable, telephone company charges for voice lines and Internet access
 - AT&T, Verizon
 - Network operating systems:
 - Windows Server, Novell, Linux, Unix
 - Network hardware providers:
 - Cisco, Alcatel-Lucent, Nortel, Juniper Networks

Infrastructure Components

- Internet platforms
 - Hardware, software, management services to support company Web sites, (including Web hosting services) intranets, extranets
 - Internet hardware server market: Dell, HP/Compaq, IBM
 - Web development tools/suites: Microsoft (FrontPage, .NET) IBM (WebSphere) Sun (Java), independent software developers: Adobe, RealMedia

Infrastructure Components

- Consulting and system integration services
 - Even large firms do not have resources for a full range of support for new, complex infrastructure
 - Software integration: ensuring new infrastructure works with legacy systems
 - Accenture, IBM Global Services, EDS, Infosys, Wipro

Contemporary Hardware Platform Trends

- The emerging mobile digital platform
 - Cell phones, smartphones (BlackBerry, iPhone)
 - Have assumed data transmission, Web surfing, e-mail and IM duties
 - Netbooks
 - Small, low-cost lightweight notebooks optimized for wireless communication and core computing tasks
 - Tablets (iPad)
 - Networked e-readers (Kindle)